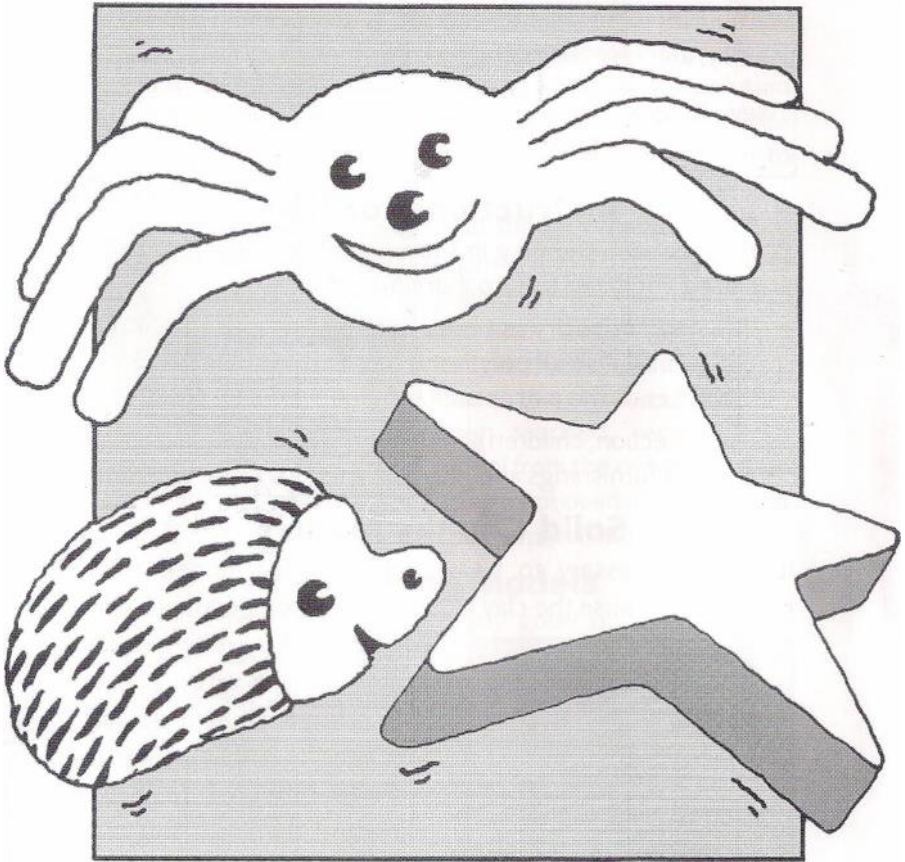


# NEWCLAY

## INSTRUCTION LEAFLET



Create lots of different shapes and models with this nylon-reinforced modelling clay which hardens when left to dry or can be fired in a kiln.

---

---

# Modelling with Newclay

Newclay is an off-white clay which, because it is nylon-reinforced, is not brittle. The clay makes strong models, even those made by small children. However, a hardener is available for older children and adults which, when applied to the clay, increases its strength still further.

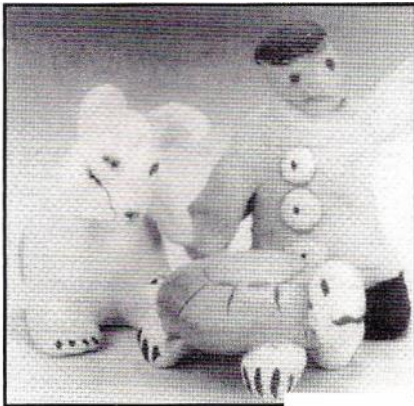
Newclay is available in grey and terracotta colours, and in 12.5 kilo, 4.5 kilo, 2.5 kilo and 1 kilo sizes.

## Instructions for Use

- Always keep the clay in the original packaging or in a closed container to stop it drying out.
- If the clay does dry out break it into small pieces, put the pieces into a small polythene bag and sprinkle water on them. Leave the pieces until soft and workable again.
- For protection, children should wear overalls or old clothes and soft furnishings and play surfaces should be covered.

## Solid Chunky Models

It is not necessary to treat solid Newclay models with



Hardener because the clay alone will be strong enough. For example, start by rolling out a ball of clay - this can be a head or the body of an animal. Use your fingers to poke eyes into it or create other features by pulling and shaping. You can add materials to the clay, like a piece of wood or seeds, or wool for hair.

*Rabbit, Tortoise and Man, painted when dry.*

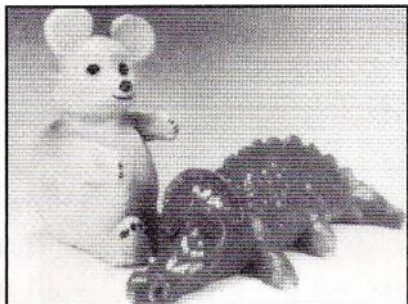
---

---

## Larger Models

Larger models made entirely out of clay may be too heavy (as well as use up too much of your clay) so make the bulk of the model from slightly damp paper, screwed up into the required shape. Cover the paper with a layer of clay and do your modelling on the outside of the bulk shape. You can also build a model around Newclay Modelling Wire.

The clay may begin to dry a little as your work progresses so dampen the surface slightly with a sponge.

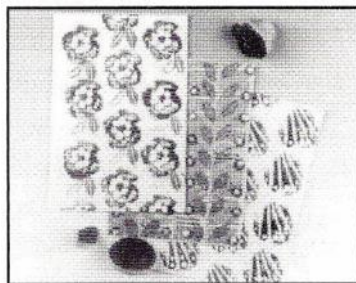
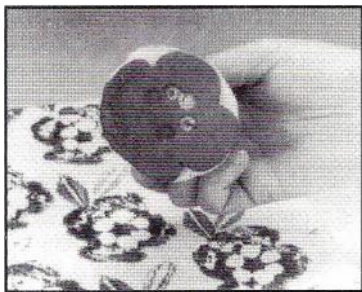


*Teddy and Fun Monster - both filled with paper and painted when dry*

You can add extra pieces to your model by smearing the joints together. If a piece falls off after drying it can be glued back into place with PVA glue, or fresh clay can be added to the dry clay surface.

## Printing

It is easy to use Newclay for printing. Cut out a pattern from a chunk of clay, the way you do for potato printing, or press blocks against a rugged surface to create a textured print. You can create even more unusual patterns if you use clay that has other materials sunk into it, such as shells.



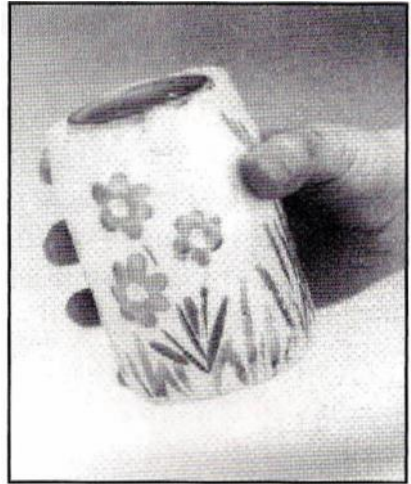
*Creating patterns using a printing block*

---

---

## Making Pots

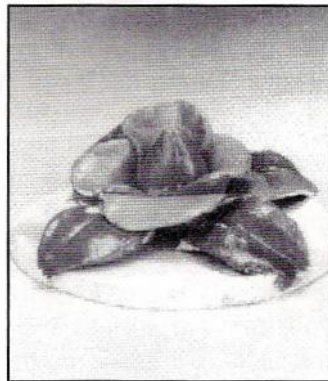
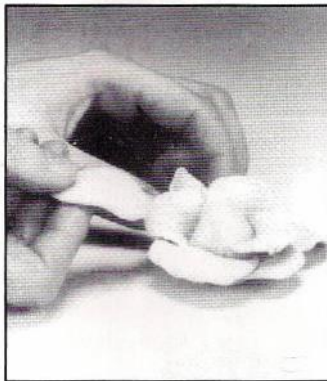
Newclay is not designed to hold water so to make pots, cups or vases, cover a glass or polythene container with corrugated paper then wrap or coil the clay around it. The clay grips well to the corrugated paper so you can mould your shape.



*Flower vase made from a glass jar and decorated when dry*

## Modelling in Relief

Newclay can be made into both very small or very large items and, unlike most other clays, can be glued using PVA glue to cardboard tubes, boxes or hardboard. You can make many patterned objects this way, such as pictures or decorated boxes.



*Rose applied to a box lid and painted when dry*

---

---

## Hardener H1

Hardener H1 should only be used by adults and older children or by children who are under adult supervision. H1 is a green or grey powder which must be whisked into very hot water (62g of powder to 570ml of water). The powder will dissolve quite quickly and the solution must then be left to cool. If the solution is put into a resealable airtight jar it can be used indefinitely. Apply the solution only when your model is completely dry; two or three washes with a brush should be sufficient. Remember to wash your brush after use.



*Mixing the Hardener H1*

Your model can be hardened further if a treated piece is placed in a cold oven and warmed to a maximum temperature of 200°C (400°F). Once this temperature has been reached, remove your model from the oven. Children using a hot oven must be under adult supervision.

## Finishing Models

Models can be painted with any good quality acrylic or ceramic paints but experiment on small pieces before painting all of a large finished model. Many materials can be stuck onto the surface of the clay using Newclay Gloss as an adhesive, including glitter, and you can overpaint your finished surface with the Gloss to create a tough, transparent layer.



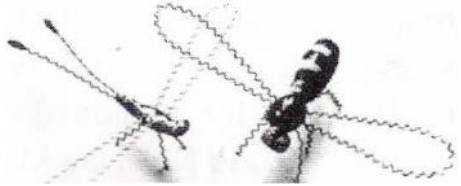
*Painting the model using Newclay Gloss*

---

---

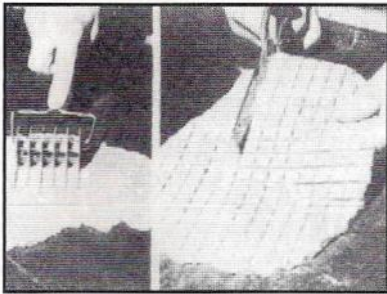
## Modelling Wire

Newclay Modelling Wire is crinkled and bends easily to hold clay in place as an armature and to give interesting effects as part of a model.



*Modelling with wire*

## Mosaic Making



*Cutting with tessera cutter*

To make mosaics, roll out the clay into a thin layer with a rolling pin and cut it with a tessera cutter. Once they are dry and coloured, the pieces can be cut off with scissors.

## Hardener H2

Hardener H2 is mixed into the clay just before use. The whole mass of the clay starts to harden straightaway so H2 is more suitable for experienced modellers.

## Using Newclay in a Kiln

Newclay will fire well in the range of 1000°C to 1250°C and many glazes can be used with good results.

---

ALL PRODUCTS MADE IN BRITAIN AT:  
NEWCLAY PRODUCTS LTD, 1 BATTLE ROAD, HEATHFIELD  
INDUSTRIAL ESTATE, NEWTON ABBOT, DEVON, TQ12 6RY  
[www.newclay.co.uk](http://www.newclay.co.uk)